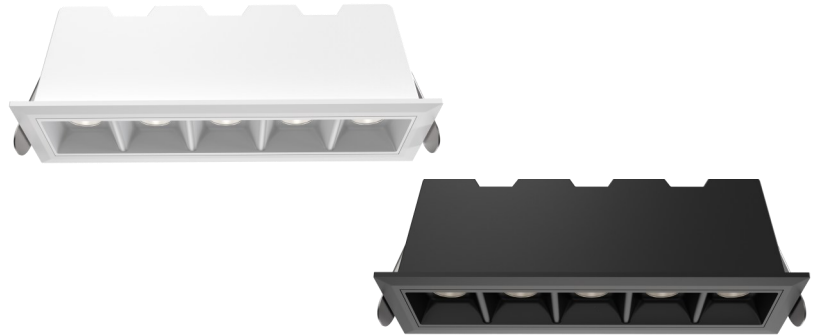


## 10W LED LINEAR LIGHT

### Product Features

- IP20 Rating
- External flicker-free driver
- Easy installation and maintenance



### Technical Specification

Model	SE-DL694005-3K/4K
Watts	10W SMD
Input Voltage	AC 220-240V 50/60Hz
Power Factor	>0.90
Beam Angle	24°
Colour Temp.	2700K / 4000K
CRI	Ra>90
Lumens Output	100lm/W
Dimmable	Non Dimmable
Size	147x45x50mm
Cutout Size	139*37mm
Housing Colour	White / Black
IP Rating	IP 20

