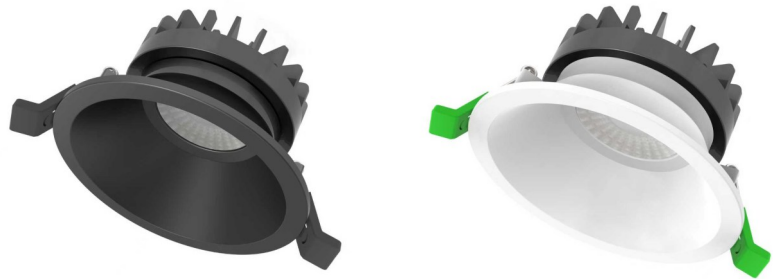


10W SMD DOWNLIGHT KIT (DL9414)

Product Features

- Deep recessed anti-glare design
- Commercial grade quality and design
- 5 colour selectable 2700K-6500K
- Made with LM-80 certified SMD LED chips
- Long life-span with low power consumption
- Twist-to-lock different cover options



Technical Specification

| | |
|-----------------------------|--|
| Model | SE-DL9414-10W-TC |
| Watts | 10W |
| Input Voltage | AC 240V 50/60Hz |
| LED Chip | SMD LED |
| Colour Temp. | 5-CCT: 2700-3000-4000-5000-6500K |
| Lumens Output | 750—900lm |
| CRI | Ra>90 |
| Beam Angle | 60° |
| Size | ø100*H54mm |
| Cutout | ø90mm |
| IP Grade | IP 54 |
| Dimmable | Triac dimming, flicker free, C-bus2 compatible |
| IP Grade | IP44 (Front) |
| Housing Colour | White / Black |
| Front Cover (Twist-to-lock) | Matte Gold/Bright Gold/Brass/Copper/Chrome |

Matte Gold
DL9414-MG



Bright Gold
DL9414-BG



Brass
DL9414-BR



Copper
DL9414-CP



Chrome
DL9414-CR

